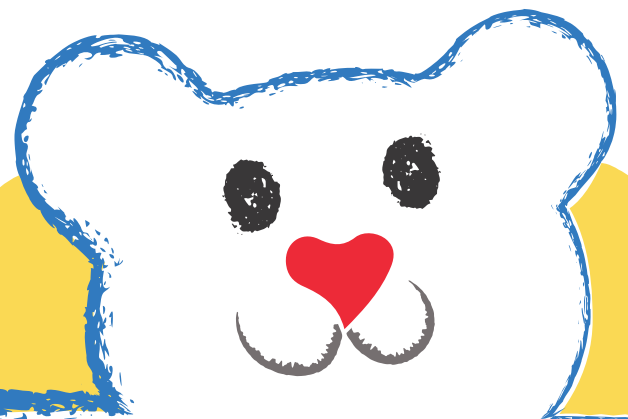


Jeremiah's Place

Protecting Children. Strengthening Families. Transforming Communities.

How To Make a JereBear

Crochet Pattern: Credit - Riley Konesky @crayoncrochetcritters



Teddies For Jeremiah's Place

Jeremiah's Place are asking for these knitted teddy bears as they have found that children who have their own toy to cuddle settle in better and quicker than those who have nothing. Each child keeps his or her teddy and takes it home so there is an ongoing need.

They are to be washable and stuffed with polyfill. It is important that they be kept simple – no buttons for eyes or extra trim.



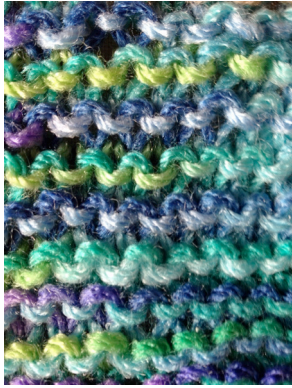
Instructions for 11-12" Teddy

Materials

- Size 7 needles, stitch holder, darning needle
- Bag of Poly-Fil, polyester fiberfill
- Worsted weight washable yarn (4 ply - #4 Medium)
 - Main color (MC) for feet, head and hands
 - Color for trousers and scarf (TC)
 - Coordinating color for shirt and sleeves (SC)
 - Black yarn for face

Numbers in brackets are for approx. length of yarn to leave when joining yarn for easier sewing up teddy later. Once you get used to the pattern you will be able to judge for yourself.

Garter Stitch



Stocking Stitch



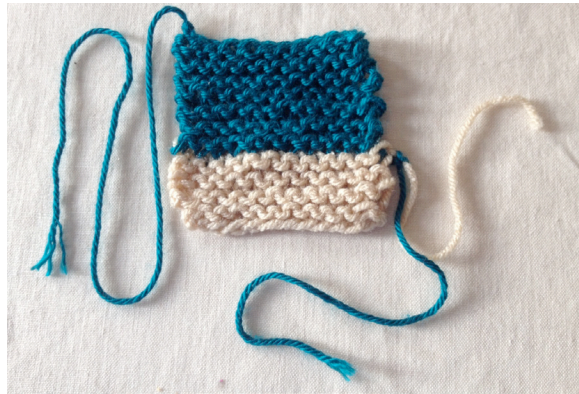
Body

1. Cast on **16** sts in MC, knit (garter stitch) **8** rows (6" of each color).
2. Change to trouser color and knit **20** rows, put on stitch holder. (6" TC)
3. Make second leg the same (6" MC and 12" TC).
4. Knit across all **32** sts for **10** rows (6" TC and 12" SC).
5. Change to shirt color and knit **16** rows (12" SC and 18" MC).
6. Change to MC and work stocking stitch (knit 1 row purl 1 row) for **20** rows.
7. Cast/bind off (18" MC).



Arms – Make 2

1. Cast on **12** sts in MC, knit **8** rows (6” MC and 9” SC).
2. Change to shirt color and knit **14** rows, cast/bind off (12” SC).



Scarf

1. Cast on **70** sts in trouser color (4”).
2. Knit 4 rows and cast/bind off (4”) (Or can be in rows of different colors).
3. Sew in ends.

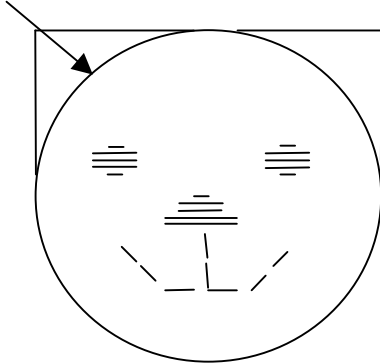
To Finish

(see next page for more details)

1. On wrong side of work, use yarn to match each part of teddy.
2. Anchor yarn well each time and thread end through seam.
3. Sew up legs and center back seam of body.
4. Move neck draw yarn to outside when moving from shirt to head.
5. At top of head keep long ends for sewing top and ears after stuffing.
6. Sew up seam of arms, turn body and arms to right side.
7. Stuff teddy and arms.
8. Draw yarn around bottom of legs and arms, anchor, thread end through stuffing.
9. Sew across top of head, sew diagonal top corners for ears, see below.
10. Sew on arms, start at back of arm on side of body bringing arms slightly forward.
11. Draw yarn around neck to tighten/shape, leave yarn.
12. Tie scarf on teddy and use yarn to sew few stitches to anchor scarf.

Face embroidery

1. Embroider eyes, nose and mouth with black yarn (see following image).
2. Thread yarn through body and anchor at back of neck, where it will be covered by scarf, before and after doing face.
3. Stitch ears with main color.



More Detailed Instructions-Teddy Bear Finish

1. Lay the knitted bear flat on the reverse side.
2. Start with the scarf and weave the yarn at the ends of the scarf in about 1-2 in and then cut off the end of the yarn. Set scarf aside.

Arms

1. Find the end where the two colors join.
2. Fold it in half lengthwise so that the inside is the “right” side.
3. Take the yarn that is the color of the hand and sew from the hand/sleeve junction to the hand, weave end into seam, leave cast-on yarn to sew bottom after stuffing.
4. Take the yarn that is the color of the sleeve and sew from the junction to the end of the sleeve.

Legs

1. Start at the junction of the feet and legs.
2. Sew the skin color from the junction to the end of the feet, weave in end, leave yarn to sew bottom after stuffing.
3. Sew up the leg to the body, tie to center yarn.
4. Repeat with second leg.

Back

1. Weave the 2 extra yarns down towards the legs, keeping the longest yarn at the junction of legs and finish going up the back, weave in the end.
2. Sew the shirt yarn up to the neck.
3. Keep the longest yarn at the neck to cinch the neck later, weave other end in seam.

Head

1. Move long yarn from shirt to right side of work before using the skin-colored yarn up the back of the head to the top, leave end for later; use the skin-colored yarn up the back of the head; sew to the top.
2. Turn the bear inside-out; you now have a tube open at the top of head and bottom of legs.
3. Stuff the legs up to the waist and sew off the feet by using a cinch-stitch (catch up each cast on stitch around in a circle and pull tight into a rounded end, anchor yarn firmly). Run the end of the yarn through the stuffing.
4. Stuff the top and use the top 2 yarns to sew across the top and form the ears.
5. Use the shirt yarn at the neck to cinch off the neck and anchor it well – you will use this to anchor the scarf on with a few stitches.
6. Stuff the arms and sew up the hands using cinch-stitch as for feet. Run the end of yarn through stuffing. Sew arms to side of body, start at the back of arm and pull toward front as you sew around the base of the arm. Anchor yarn and run end through stuffing.
7. Embroider the eyes, nose and mouth with black yarn. Thread the yarn through the body and anchor at the back of the neck where it will be covered by the scarf before and after doing the face.



Jeremiah's Place
Protecting Children. Strengthening Families. Transforming Communities.

JereBear Crochet Pattern

Written by: Riley Konesky (@crayoncrochetcritters)

Jeremiah's Place is asking for these crochet teddy bears as they have found that children who have their own toy to cuddle settle in better and quicker than those who have nothing. Each child keeps his or her teddy and takes it home so there is an ongoing need.

They are to be washable and stuffed with polyfill. It is important that they be kept simple – no buttons for eyes or extra trim.

Materials:

- Regular yarn in desired colors (some brand suggestions: RedHeart, BigTwist, I Love This Yarn...)
- A small bit of black yarn
- 4.5 mm crochet hook
- Scissors
- Tapestry needle
- Stuffing



Abbreviations:

R = row

mc = magic circle

st = stitch

sc = single crochet

sl st = slip stitch

inc = 2 sc in the next stitch

dec = single crochet 2 stitches together

f.o. = finish off (slip st, then cut yarn and pull through)

BLO = back loop only

(12) = number of stitches you should have at the end of the round/row

** repeat whatever is inside the asterix (if it appears like this *sc in next 2, inc in next st* x2 this would mean that you would repeat what is in the asterix 2 times)

Important notes regarding this pattern...

It is VERY important to keep up with the length requirements given periodically throughout the pattern. Depending on how tight or loose you

may make your stitches, the length will turn out differently. The finished bear should be between 10-12 inches long.

Legs: start with desired fur color

R 1: 6 sc in mc

R 2: inc in each st around (12)

R 3-4: sc in each st around (12)

Switch to pants color

R 5: in FL only, sc in each st around (12)

R 6: in BL only, sc in each st around (12)

R 7-12: continuing now in both loops, sc in each st around (12)

Fasten off and stuff with polyfil

NOTE: depending on how tight/loose you make your stitches, you may need to crochet an additional row or two to meet the desired leg length. Prior to fastening off, measure to make sure that the length of the leg is just under 4 inches.

Repeat steps 1-12 for second leg- do NOT fasten off however

Body: continue with color of pants

R 1: Connect legs together with 1 sc. Continue to crochet around until you are back at where you connected the pieces.

NOTE: At this point, you should have anywhere between 24-30 sts in your work. For reference, mine ended up with 27 sts so I'll be using that number. As long as you end with 12 sts around before starting the head, it will turn out fine!

R 2-12: sc in each st around (27)

Make sure to stuff your work periodically!

NOTE: depending on how tight/loose you make your stitches, you may need to crochet an additional row or two to meet the desired

body length. Prior to continuing on, measure to make sure that the length of your work (from bottom of feet to where you left off) is about 8 inches long.

- R 13: *sc in the next 7 sts, dec in next st* repeat ** around (24)
 - R 14: sc in each st around (24)
 - R 15: *sc in the next 4 sts, dec in next st* repeat ** around (20)
 - R 16: *sc in the next 3 sts, dec in next st* repeat ** around (16)
 - R 17: *sc in the next 2 sts, dec in next st* repeat ** around (12)
- Switch to fur colored yarn

Head: in desired fur color

- R 1: in FL only, inc in each st around (24)
- R 2: continuing in both loops, *sc in next 3 sts, inc in next st* repeat ** around (30)
- R 3: *sc in next 4 sts, inc in next st* repeat ** around (36)
- R 4-13: sc in each st around (36)
- R 14: *sc in the next 4 sts, dec in next st* repeat ** around (30)
- R 15: *sc in the next 3 sts, dec in next st* repeat ** around (24)
- R 16: *sc in the next 2 sts, dec in next st* repeat ** around (18)
- R 17: *sc in the next st, dec in next st* repeat ** around (12)
- R 18: dec in each st around (6)

Fasten off and sew top of head shut.

Arms: starting in fur colored yarn

- R 1: 6 sc in mc
- R 2: inc in each st around (12)
- R 3-4: sc in each st around (12)

Switch to shirt color

- R 5: in FL only, sc in each st around (12)
 - R 6: in BL only, sc in each st around (12)
 - R 7-13: continuing now in both loops, sc in each st around (12)
- Fasten off and stuff with polyfil

Ears: in fur colored yarn

R 1: 6 sc in mc

R 2: *sc in next st, inc in next st* repeat ** around (9)

R 3: sc in each st around (9)

Now you will finish off by attaching the arms and ears to the body piece.

Using black yarn or embroidery floss, sew on the facial features of the bears by referencing the photos below!



